

# 2019 DORP Report for Auglaize County Educational Academy

IRN: 000288  
School Type: High School

Address: 1130A East Albert St  
Lima, OH 45804-1614

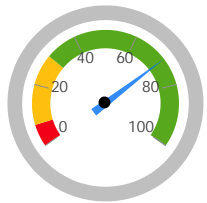
County: Allen  
ITC: WOCO  
Sponsor: Buckeye Community Hope Foundation

## Graduation Rates

### 4-Year Graduation Rate

Applies to the Class of 2018, i.e. students who entered 9th grade in 2015 and graduated by 2018.

Class of 2018 Graduates:	Students Countable:	Graduation Rate:
32	45	71.1%



**RATING**

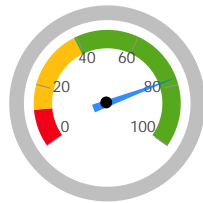
**Exceeds Standards**

Exceeds	36.0-100.0%
Meets	8.0-35.9%
Does Not Meet	0.0-7.9%

### 5-Year Graduation Rate

Applies to the Class of 2017, i.e. students who entered 9th grade in 2014 and graduated by 2018.

Class of 2017 Graduates:	Students Countable:	Graduation Rate:
21	27	77.8%



**RATING**

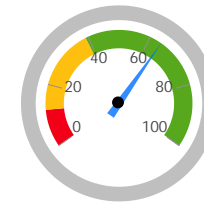
**Exceeds Standards**

Exceeds	40.0-100.0%
Meets	12.0-39.9%
Does Not Meet	0.0-11.9%

### 6-Year Graduation Rate

Applies to the Class of 2016, i.e. students who entered 9th grade in 2013 and graduated by 2018.

Class of 2016 Graduates:	Students Countable:	Graduation Rate:
16	25	64.0%



**RATING**

**Exceeds Standards**

Exceeds	40.0-100.0%
Meets	12.0-39.9%
Does Not Meet	0.0-11.9%

### 7-Year Graduation Rate

Applies to the Class of 2015, i.e. students who entered the 9th grade in 2012 and graduated by 2018.

Class of 2015 Graduates:	Students Countable:	Graduation Rate:
22	34	64.7%

### 8-Year Graduation Rate

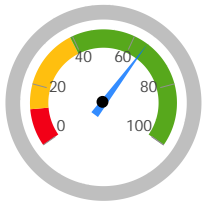
Applies to the Class of 2014, i.e. students who entered the 9th grade in 2011 and graduated by 2018.

Class of 2014 Graduates:	Students Countable:	Graduation Rate:
22	32	68.8%

### Combined Graduation Rate

The weighted average of the five individual graduation rates.

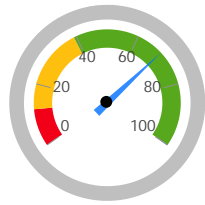
Combined Graduates:	Combined Students:	Graduation Rate:
113	163	69.3%



**RATING**

**Exceeds Standards**

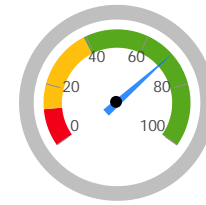
Exceeds 40.0-100.0%  
 Meets 12.0-39.9%  
 Does Not Meet 0.0-11.9%



**RATING**

**Exceeds Standards**

Exceeds 40.0-100.0%  
 Meets 12.0-39.9%  
 Does Not Meet 0.0-11.9%



**RATING**

**Exceeds Standards**

Exceeds 40.0-100.0%  
 Meets 12.0-39.9%  
 Does Not Meet 0.0-11.9%

### High School Assessment Test Passage Rate

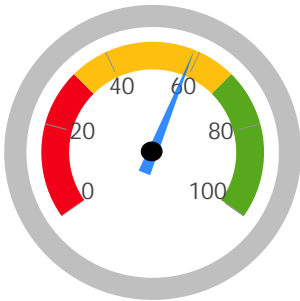
The test passage rate is the percent of students in 12th grade or nearing 22 years old who have passed all required high school assessments.

Students in the School for a Full Academic Year:  
**17**

Students Who Passed All Required Tests:  
**10**

Students who Passed All Required Tests:  
**58.8%**

Exceeds 68.0-100.0%  
 Meets 32.0-67.9%  
 Does Not Meet 0.0-31.9%



**RATING**

**Meets Standards**

### Progress

This measures the progress for all students in math and reading.

Progress Score		
Reading	Mathematics	Overall
Exceeds Standards	Meets Standards	Meets Standards
	Exceeds 2.00 and up	
	Meets -2.00 to 1.99	
	Does Not Meet below -2.00	

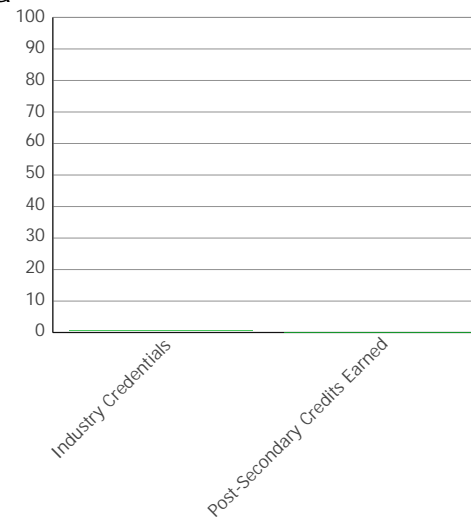
**RATING**

**Meets Standards**

### Other Student Outcome Data

Denominator (Graduation Cohort for 2014 - 2018):

	Student #	Pct
Industry Credentials	1	0.6
Post-Secondary Credits Earned	0	0.0



### Annual Measurable Objectives

The Annual Measurable Objectives score is determined using multiple data points. For each student subgroup, the school's results are compared to the statewide Annual Measurable Objectives (AMOs). "Points" are earned based on how the school compared to the AMO, to their results last year (improvement), and to how far they were from meeting the AMO (the "gap"). These points are averaged to determine a preliminary score and rating, which may be demoted if certain minimum performance requirements are not met.

### AMO - English Language Arts Proficiency

Subgroup	Metrics	Took Test #	Perf Index	Goal	LT Goal	LT Gap	Took Test LY #	Perf Index LY	Improve	LT Gap Close %	VA Gain Index	Points
All Students		22	74.545	85.8	100.0	NC	18	NC	0.0	0.0%	(1)	0.0
Am. Indian or Alaskan Native		0	NC	79.8	88.1	NC	0	NC	NC	NC	NC	NR
Asian or Pacific Islander		0	NC	92.8	95.8	NC	0	NC	NC	NC	NC	NR
Black, Non-Hispanic		0	NC	65.4	79.7	NC	0	NC	NC	NC	NC	NR
Hispanic		1	NC	73.4	84.4	NC	0	NC	NC	NC	NC	NR
Multiracial		1	NC	79.5	88.0	NC	2	NC	NC	NC	NC	NR
White, Non-Hispanic		20	77.500	87.1	92.4	NC	16	NC	0.0	0.0%	(1)	0.0
Economic Disadvantage		13	NC	72.4	83.8	NC	6	NC	NC	NC	NC	NR
English Learner		0	NC	67.5	80.9	NC	0	NC	NC	NC	NC	NR
Students with Disabilities		0	NC	59.6	76.3	NC	3	NC	NC	NC	NC	NR

Total of Subgroup Points: 0.0  
 Possible Subgroup Points: 200.0

English Language Arts Points Earned (Total / Possible): 0.0

1. If Perf Index is greater than the (Short Term) Goal, then 100.0 points are earned and the Long Term Gap is N/A. If not, the LT Gap is the difference between Perf Index and the Long Term Goal. Subgroups of less than 20 students are Not Rated (NR).
2. A full 100.0 points are also awarded if the single year Value Added Gain Index for the subgroup is at least 1.0.
3. Otherwise, LT Gap Close % = (Improv / LT Gap) \* 100., and the points awarded are LT Gap Close % \* 10. It is impossible to earn more than 100 or less than zero points.
4. After all subgroup points have been calculated, they are added together. The total is divided by the maximum points possible (100 x number of subgroups that were not NR) to determine the final points for Reading.

### AMO - Math Proficiency

Subgroup	Metrics	Took Test #	Perf Index	Goal	LT Goal	LT Gap	Took Test LY #	Perf Index LY	Improve	LT Gap Close %	VA Gain Index	Points
All Students		29	53.226	86.2	100.0	46.8	20	51.500	0.0	0.0%	(1)	0.0
Am. Indian or Alaskan Native		0	NC	78.1	87.1	NC	0	NC	NC	NC	NC	NR
Asian or Pacific Islander		0	NC	97.9	98.8	NC	0	NC	NC	NC	NC	NR
Black, Non-Hispanic		0	NC	63.5	78.5	NC	0	NC	NC	NC	NC	NR
Hispanic		2	NC	73.8	84.6	NC	0	NC	NC	NC	NC	NR
Multiracial		1	NC	78.9	87.6	NC	2	NC	NC	NC	NC	NR
White, Non-Hispanic		26	52.963	88.3	93.1	40.1	18	NC	0.0	0.0%	(1)	0.0
Economic Disadvantage		18	NC	72.7	84.0	NC	8	NC	NC	NC	NC	NR
English Learner		0	NC	71.8	83.4	NC	0	NC	NC	NC	NC	NR
Students with Disabilities		4	NC	60.5	76.8	NC	3	NC	NC	NC	NC	NR

Total of Subgroup Points: 0.0  
 Possible Subgroup Points: 200.0  
 Math Points Earned (Total / Possible): 0.0

1. If Perf Index is greater than the (Short Term) Goal, then 100.0 points are earned and the Long Term Gap is N/A. If not, the LT Gap is the difference between Perf Index and the Long Term Goal. Subgroups of less than 20 students are Not Rated (NR).
2. A full 100.0 points are also awarded if the single year Value Added Gain Index for the subgroup is at least 1.0.
3. Otherwise, LT Gap Close % = (Improv / LT Gap) \* 100., and the points awarded are LT Gap Close % \* 10. It is impossible to earn more than 100 or less than zero points.
4. After all subgroup points have been calculated, they are added together. The total is divided by the maximum points possible (100 x number of subgroups that were not NR) to determine the final points for Math.

### AMO - Graduation Rate

Subgroup	Metrics	Grads #	Non-Grads #	Cohort Students #	Grad Rate %	Goal	Gap	Grads LY #	Non-Grads LY #	Cohort Students # LY	Grad Rate LY %	Improve	Points
All Students		32	13	45	71.1	86.0	21.9	17	8	25	68.0	3.1	100.0
Am. Indian or Alaskan Native		0	0	0	NC	79.9	NC	0	0	0	NC	NC	NR
Asian or Pacific Islander		0	0	0	NC	89.3	NC	0	0	0	NC	NC	NR
Black, Non-Hispanic		1	0	1	NC	70.3	NC	0	0	0	NC	NC	NR
Hispanic		0	0	0	NC	76.2	NC	0	0	0	NC	NC	NR
Multiracial		2	0	2	NC	81.0	NC	0	0	0	NC	NC	NR
White, Non-Hispanic		29	13	42	69.0	89.1	24.0	17	8	25	68.0	1.0	41.7
Economic Disadvantage		9	5	14	NC	75.7	NC	6	1	7	NC	NC	NR
English Learner		0	0	0	NC	61.2	NC	0	0	0	NC	NC	NR
Students with Disabilities		6	1	7	NC	73.8	NC	4	3	7	NC	NC	NR

Total of Subgroup Points: 141.7  
 Possible Subgroup Points: 200.0  
 Graduation Rate Points Earned (Total / Possible): 70.8

1. If [Grad Rate %] is greater than the Goal, then 100.0 points are earned and the Gap is not applicable (N/A). If not, the Gap is the difference between [Grad Rate %] and the Goal. Subgroups of less than 20 students are Not Rated (NR).
2. Improvement from last year's result is [Grad Rate %] minus [Grad Rate LY %]. If Improvement is greater than the Gap, then 100.0 points are earned.
3. Otherwise, partial points are awarded using the formula (Improvement / Gap) \* 100. It is impossible to earn more than 100 or less than zero points.
4. After all subgroup points have been calculated, they are added together. The total is divided by the maximum points possible (100 x number of subgroups that were not NR) to determine the final points for Graduation Rate.

### AMO - English Learners

	This Year	Last Year	Change
EL Students #	0	0	
Proficient #	0	0	
Not Proficient, Met Growth Target #	0	0	
Met %	0.000	0.000	0.000
Interim Goal %	54.0		
Interim Goal Met?	*		
Long Term Goal %	75.0	75.0	
Long Term Goal Gap	0.000	75.000	-75.000

$$\begin{matrix} \text{Met \%} \\ \text{Improvement} \end{matrix} \quad 0.000 \quad / \quad \begin{matrix} \text{Current} \\ \text{Year Gap} \end{matrix} \quad 0.000 \quad = \quad 0.000\% \quad = \quad 0.000 \quad \text{Points}$$

- 1) Please note that intermediate calculations are not rounded. Although three decimal places are displayed in this table, \*all\* decimal places are used internally until the final calculation, where the final points earned are rounded to one decimal place.
- 2) If the gap improvement is more than 10%, so the maximum 100 points have been earned.

### AMO - Preliminary Score

The preliminary score is the average of the English Language Arts, Math, and Graduation Rate from the preceding pages. The result is applied to the rating scale to determine a preliminary rating.

English Language Arts Points:	0.0	<b>Rating Scale:</b> Exceeds Standards 36.0 - 100.0% Meets Standards 1.0 - 35.9% Does Not Meet Standards 0.0 - 0.9%	<b>Preliminary Rating:</b>  <h2>Meets Standards</h2>
Math Points:	0.0		
Graduation Rate Points:	70.8		
English Learner Points:	0.0		
<b>Preliminary Score:</b>	<b>23.6</b>		

### AMO - Rating Demotions

### Participation Rates

The minimum Participation Rate is 95.0%. If any subgroup does not meet this requirement in either English Language Arts or Math, a rating demotion occurs. Participation Rate is not calculated if a subgroup does not have at least 40 students required to take the test.

#### English Language Arts

Subgroup	Metrics	Required to Participate #	Participated #	Participation Rate %
All Students		33	33	NC
Am. Indian or Alaskan Native		0	0	NC
Asian or Pacific Islander		0	0	NC
Black, Non-Hispanic		0	0	NC
Hispanic		3	3	NC
Multiracial		2	2	NC
White, Non-Hispanic		28	28	NC
Economic Disadvantage		19	19	NC
English Learner		0	0	NC
Students with Disabilities		1	1	NC

#### Math

Subgroup	Metrics	Required to Participate #	Participated #	Participation Rate %
All Students		43	43	100.0
Am. Indian or Alaskan Native		0	0	NC
Asian or Pacific Islander		0	0	NC
Black, Non-Hispanic		0	0	NC
Hispanic		5	5	NC
Multiracial		2	2	NC
White, Non-Hispanic		36	36	NC
Economic Disadvantage		26	26	NC
English Learner		0	0	NC
Students with Disabilities		5	5	NC

### AMO - Final Score and Rating

If a rating demotion is required, then the preliminary score is reduced by 5.0 points to determine the final score. The final score is applied to the rating scale to determine the final rating.

Preliminary Rating:	Demotion Required?	Final Score:	Rating Scale:	<div style="background-color: #1a3d4d; color: white; padding: 5px; font-weight: bold;">RATING</div> <div style="font-size: 24px; font-weight: bold; margin-top: 10px;">Meets Standards</div>
Meets Standards	No	23.6	Exceeds Standards 36.0 - 100.0%	
			Meets Standards 1.0 - 35.9%	
			Does Not Meet 0.0 - 0.9% Standards	

Overall Rating for the Dropout Recovery School

	Exceeds	Meets	Does Not Meet
Combined Graduation Rate:	30	20	0
High School Assessment Test Passage:	20	10	0
Progress:	30	20	0
Annual Measurable Objectives:	20	10	0

70 points earned out of a possible 100 = 70.0%

A school that improves its High School Assessment Test Passage Rate and the 4-year, 5-year, 6-year, 7-year, and 8-year Graduation Rates by 10% or more in both the current and prior two year comparison periods can be rated no lower than Meets Expectations.

Because the school earned enough points for a higher rating than Does Not Meet Standards, this calculation does not apply.

**Rating Scale:**

Exceeds Standards	80.0 - 100.0%
Meets Standards	40.0 - 79.9%
Does Not Meet Standards	0.0 - 39.9%

70

RATING

Meets Standards

[Click here](#) to see the Secure Data Center - Status of Reports report